

**Route 3: starts a The Sun Inn and ends at The Sun Inn**

Start at The Sun Inn and follow the red line answering clues at 8 locations. You end at The Sun Inn

The clues are

- 1) Relates to the image associated with location
- 2) General knowledge question, answer found on [www.lemsfordhistory.co.uk](http://www.lemsfordhistory.co.uk)
- 3) Observation Question : The answer can only be found at the location

The following pages contain 8 locations with 3 clues per location. Information on the 4 Pubs & Inns you will go to, and a answer sheet to fill in.

The answer to the questions can only be sent by Email request. See details below

The answers to the questions are available via [TH2015@lemsfordhistory.co.uk](mailto:TH2015@lemsfordhistory.co.uk). When you request answer sheet we require your name and how you will use the treasure hunt, and if it raised funds the name of the good cause.

Go to [www.lemsfordhistory.com/TH2105](http://www.lemsfordhistory.com/TH2105) for more routes that start and finish at various pubs and inns in more detail with route maps and in PDF format.

The Lemsford Local History Group, formed in 2001, is interested in all aspects of the history and the people of this area - both ancient and modern. We welcome correspondence from anyone who shares this interest. The group archives now include a significant number of photographs and documents, as well as records of baptisms (to 1985), marriages (to 1970), burials (to 2003) and memorial inscriptions (to 2003) from the St John's parish church registers. Records of births, marriages and deaths before the consecration of the church in 1859 will be found in the registers of Bishop's Hatfield parish. The archive also contains admission records for the village school - St. John's Church of England Junior Mixed Infants school - since it was first opened in 1872. Check out our website [www.lemsfordhistory.co.uk](http://www.lemsfordhistory.co.uk)

**NOTE: All observation questions are on the outside of the building. You do not need to go into the building.**

**Sponsored by [www.lemsfordonline.co.uk](http://www.lemsfordonline.co.uk) Your Local Web Designer**

## Clue 1 - Long Arm & Short Arm

**Q1. Where are the men Standing ?**

- A) On the bridge**
- B) Outside the Beer House**

**Q2. What year did the Present Long & Short open?**

**Q3. Observation :**

**How many lamps (not Lights) on the building?**



The Long Arm & the Short Arm' was originally a cottage and blacksmith's shop and dates from 1734. In 1853 the buildings were described in an auction catalogue as a 'a brick built and tiled beer house, baker and grocers shop, bake house and premises'.

Read full article: <http://www.lemsfordhistory.co.uk/LS.html>

## Clue 2 -The Sun Inn

**Q4 . What did the animal in the stable (see image) supply the village with?**

**Q5. Name the fist Landlady of the Sun Inn?**

**Q6. Observation :**

**How many flares on the Sun?**



1717 is the first mention of this house as an ale – house. However, trouble was bought about by disorderly customers and in 1718 it was forbidden to use the house ' the signe of the Sun as an ale-house as apparently they were not licenced to do so. From about the mid 1700s The Sun or 'Rising sun ' as it was known was a hostelry and for some time was also the village butchers shop.

Read full article: [http://www.lemsfordhistory.co.uk/Article\\_Sun.html](http://www.lemsfordhistory.co.uk/Article_Sun.html)

### Clue 3 -Lemsford Mill

**Q7. What was the use of the Mill in 1952 (image)?**

**Q8. Name the river is the mill on?**

**Q9. Observation :**

**Where are Bloom & Cole Located in Herts?**



The Mill – Lemsford Mill is probably one of four mills on the River \*\*\* at Hatfield recorded in the Domesday Book in 1086 and is known to have milled flour since the 12th century.

Read full article: [www.lemsfordhistory.co.uk/Article\\_Mill.html](http://www.lemsfordhistory.co.uk/Article_Mill.html)

### Clue 4 - St Johns School Lemsford

**Q10. Name the year of this image and the name of the school Play?**

Clue answer at  
[www.lemsfordhistory.co.uk/Schoolgallery.html](http://www.lemsfordhistory.co.uk/Schoolgallery.html)

**Q11. Name the 1st head teacher of St John's School.?**

**Q12. Observation :**

**What entrance do Pedestrians use?**



On the 4th May 1872, the first entry in the Head Teacher's Log Book was made by \*\*the first Head Teacher. On that day, seventy-seven children, ranging in age from three to thirteen, were enrolled. They were divided into two classes.

Read full article: [www.lemsfordhistory.co.uk/St\\_johns\\_School.html](http://www.lemsfordhistory.co.uk/St_johns_School.html)

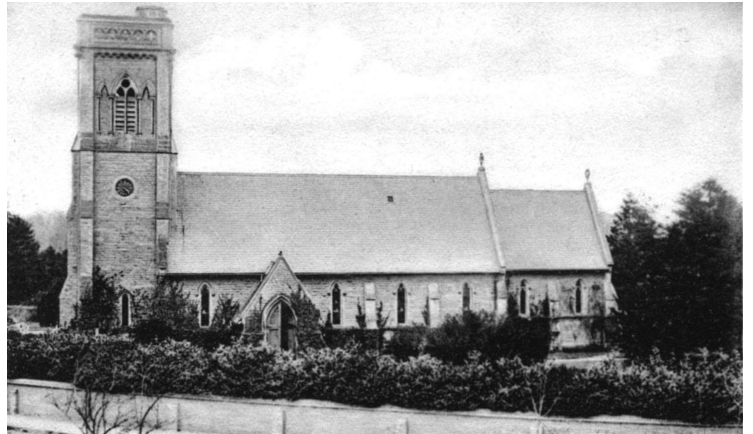
## **Clue 5 - St John's Church Lemsford**

**Q13. Whats missing in this image?**

**Q14. When was the Brocket Chapel Built and why?**

**Q15. Observation :**

**How many Stone heads on the outside of the church?**



The church was erected over 150 years ago as a memorial to George Augustus, the sixth Earl Cowper, who died before he could realise his publicly declared intention to build a church at Lemsford for the benefit of his tenants. His widow and children ensured that his wish was fulfilled, and the church, designed by David Brandon, was built and dedicated in 1859.

Read full article: [www.lemsfordhistory.co.uk/St\\_johns\\_Church.html](http://www.lemsfordhistory.co.uk/St_johns_Church.html)

## **Clue 6 - The Crooked Chimney**

**Q16. The image is from 1956, who is the Family at the door?**

**Q17. What was the name of the crooked Chimney pre 1968 and why?**

**Q18. Observation :**

**Vintages inns show the Union,. George and the Dragon are joined by which Country?**



The building was formerly Hornbeam Hall farmhouse and through the seventeenth and eighteenth centuries was owned by the Bassil family at Cromer Hyde. It is thought to have become a pub in 1756 whilst still being used as a farmhouse.

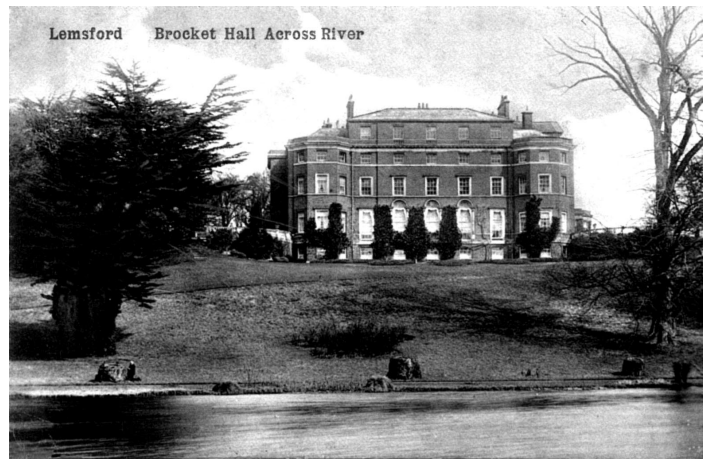
Read full article: [www.lemsfordhistory.co.uk/chequers.html](http://www.lemsfordhistory.co.uk/chequers.html)

## Clue 7 - Brocket Hall

**Q19. Image is from 1908, Who lived at brocket Hall in 1908?**

**Q20. How many Prime Ministers have lived at the Hall?**

**Q21. Observation : How many windows at the front of the house?**



Early evidence suggests the house dates back to 1239 and was called 'Watershyppes'. The area had several manors, Symonshyde, Benstead, Heron, and Chewells around the time of Henry III (1207 to 1272) these manors merge and become 'Watershyppes' and was owned by Simon Fitz Ade. They were also known as FitzSymon. In the 15th century a FitzSymonds heiress married Sir Thomas Brocket .

Read full article: [www.lemsfordhistory.co.uk/Article\\_Brocket\\_Hall.html](http://www.lemsfordhistory.co.uk/Article_Brocket_Hall.html)

## Clue 8 -The Waggoner's

**Q22. In image from 1932 find out who was the brewery and what drink was in the barrel?**

**Q23. Name the Infamous brothers, who drank at the Waggoner's?**

**Q24. Observation: Look for the man with a whip and smock. How much is his house?**



The 'Waggoners' at Ayot Green was smaller than the nearby 'Angel'. The first licensee is believed to have been Joseph Howard. In 1851 the licensee was James Aldridge. In 1881 it was owned by J.W. Kent, brewers in St Albans. It was held on a lease from a Mrs Batchelor of Croxley Green in 1904. It later became a Whitbread house. It is now a listed building; it is thought that parts date back to the 16th century.

Read full article: [www.lemsfordhistory.co.uk/Article\\_waggoners.html](http://www.lemsfordhistory.co.uk/Article_waggoners.html)

## Long Arm & Short Arm



The Long Arm & the Short Arm' was originally a cottage and blacksmith's shop and dates from 1734. In 1853 the buildings were described in an auction catalogue as a 'a brick built and tiled beer house, baker and grocers shop, bake house and premises'.

After buying the pub in 1885 for the then princely sum of £350, McMullen dug its own well to solve the 'long arm; short arm' problem caused by excessive water carrying from which the pub takes its name!

The name 'The Long Arm and The Short Arm' would seem to refer to different lengths of the two roads leading out of the village either side of the pub up to the Great North Road i.e. Brickwall Hill and Lemsford Mill Lane. The name has been attributed also to a signal board that was there before the bridge was built in 1775 that denoted the depth of water in the ford – long arm of the signal for deep water and a short arm for shallow water. Another suggestion put forward by Mr Jeremy Summers is that a coach & four horses as depicted on the pub sign has to be driven by coachman with the reins of one pair of horses (in his left hand) on a 'Long Arm' and the other pair on the 'Short Arm' . (It should be noted here that the artist who painted the original sign for the pub, John Fredrick Herring, was a noted 'whip' and an excellent coachman who regularly drove coaches through Lemsford from London to York and return) However, other suggestions have been put forward over the years and the reason for the name remains a riddle to this day.

The Long Arm & Short Arm is a great place to start or finish. It has a large car park and will provide food and drink. Check website for details

[www.mcmullens.co.uk/longarmshortarm](http://www.mcmullens.co.uk/longarmshortarm)

Or Call 01707 322401

Enjoy hearty pub fare food during the week at great Two for the Price of One (241) value in the company of locally crafted real ales, fine wines and world beers.

## The Sun Inn



1717 is the first mention of this house as an ale – house. However, trouble was bought about by disorderly customers and in 1718 it was forbidden to use the house ‘ the signe of the Sun as an ale-house as apparently they were not licenced to do so. From about the mid 1700s The Sun or ‘Rising sun ‘ as it was known, was a hostelry and for some time was also the village butchers shop.

From about 1780 to 1850 it was the family home of the Clark and then the Allen families (1883) . In 1824 the actual owner was a Mr Crabb and in 1838 John Marshall. By 1855 it had been acquired by the Hatfield brewery. At this time the landlord was a Mr John Males who was also the village wheelwright. He had a wife and son living at the pub. Later it became the home of the Halseys. In 1882 Pryor Reed an offshoot of the Hatfield brewery, were the owners. Thomas Halsey was the publican and lived there with his wife Hannah and three children. Noah Wallis, a farm labourer and his wife Emily (nee Halsey) with two children also lived there at this time. They kept cows in the adjoining field and milk could be purchased at the back door of the pub from Emily Wallis.

The Sun Inn is a great place to start or finish. It has a large car park and will provide food and drink. Check website for details

**Address: 31 Lemsford Village, Welwyn Garden City, Hertfordshire AL8 7TN**

**Phone:01707 322247**



## The Crooked Chimney



The building was formerly Hornbeam Hall farmhouse and through the seventeenth and eighteenth centuries was owned by the Bassil family at Cromer Hyde. It is thought to have become a pub in 1756 whilst still being used as a farmhouse. Circa 1780 it was owned by the Searancke family of brewers (who had been brewing in Hertfordshire since the sixteenth century) and became known as the 'Chequers'. From 1815 it was taken over by the Hatfield Brewery. Before 1830 there was a draper's shop attached to the house and many of the old farm buildings remained. Circa 1860 Thomas Woodward was the publican (and also local wheelwright).

Read full article: [www.lemsfordhistory.co.uk/chequers.html](http://www.lemsfordhistory.co.uk/chequers.html)

The Crooked Chimney in Welwyn Garden is a country pub & restaurant oozing rural charm and rustic character. Our picturesque surroundings provide the perfect backdrop for savouring the hearty, seasonal pub-food on our menu, and the carefully nurtured cask ales and fine wines gracing our bar.

Book a table online and enjoy a spot by our roaring log-fire. Or make the best of the British summertime by eating alfresco in our pretty beer garden.

The Crooked Chimneys is a great place to start or finish. It has a large car park and will provide food and drink. Check website for details

Website: [www.vintageinn.co.uk/thecrookedchimneywelwyngarden/findus/](http://www.vintageinn.co.uk/thecrookedchimneywelwyngarden/findus/)

**Monday to Saturday 12pm to 11pm. - Sundays 12pm to 10.30pm.**

Address: Cromer Hyde Lane, Lemsford, Welwyn Garden City, AL8 7XE

Telephone: 01707 397021

## The Waggoner's



The 'Waggoner's' at Ayot Green was smaller than the 'Angel'. The first licensee is believed to have been Joseph Howard. In 1851 the licensee was James Aldridge. In 1881 it was owned by J.W. Kent, brewers in St Albans. It was held on a lease from a Mrs Batchelor of Croxley Green in 1904. It later became a Whitbread house. It is now a listed building; it is thought that parts date back to the 16th century.

Read full article: [www.lemsfordhistory.co.uk/Article\\_waggoners.html](http://www.lemsfordhistory.co.uk/Article_waggoners.html)

The Waggoners is set in Ayot Green near Welwyn, between pretty houses and cottages around a beautiful English green. It is a refurbished 17th century coaching Inn run by Aude and Laurent Brydniak who have a wealth of experience and have run successful restaurants for the last 16 years.

Let our head chef tantalize your taste buds with his unique and beautiful French fusion food with influences from all over the world, while you drink some of the best hand picked wines from around the globe.

The Waggoner's is a great place to start or finish. It has a large car park and will provide food and drink. Check website for details

The Waggoner's website: [www.thewaggoners.co.uk/index.php](http://www.thewaggoners.co.uk/index.php)

Visit soon and experience the taste and atmosphere of The Waggoner's for yourself. To book a table, please call: 01707 324241

<b>Question</b>	<b>Answer</b>	<b>Points</b>
1		
2		
3		
4		
5		
6		
7		
8		
9		
10		
11		
12		
13		
14		
15		
16		
17		
18		
19		
20		
21		
22		
23		
24		
<b>Total</b>		

## **Spare Sheet for workings**